

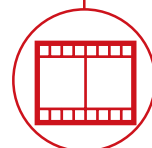
# TH 3.6



CONSTRUCTION



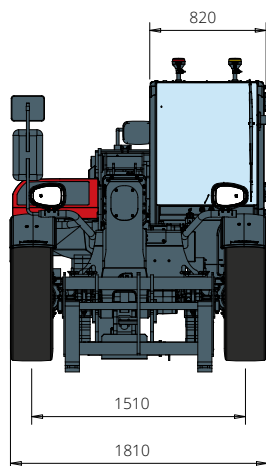
LOGISTICS



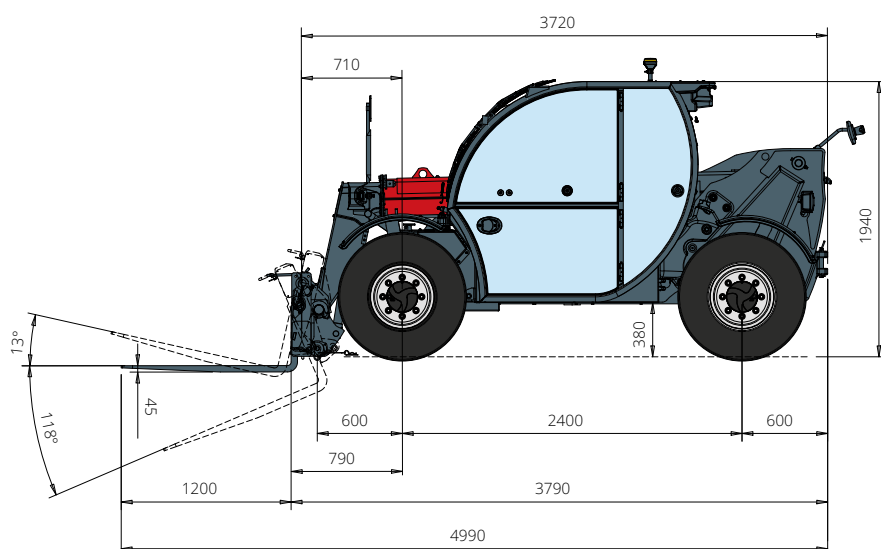
EVENTS AND  
FILM



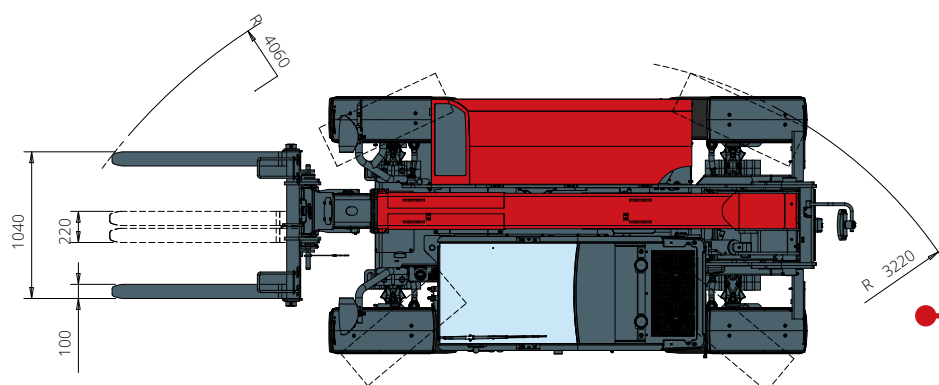
**DIMENSIONS (mm)**



**FRONT**  
view



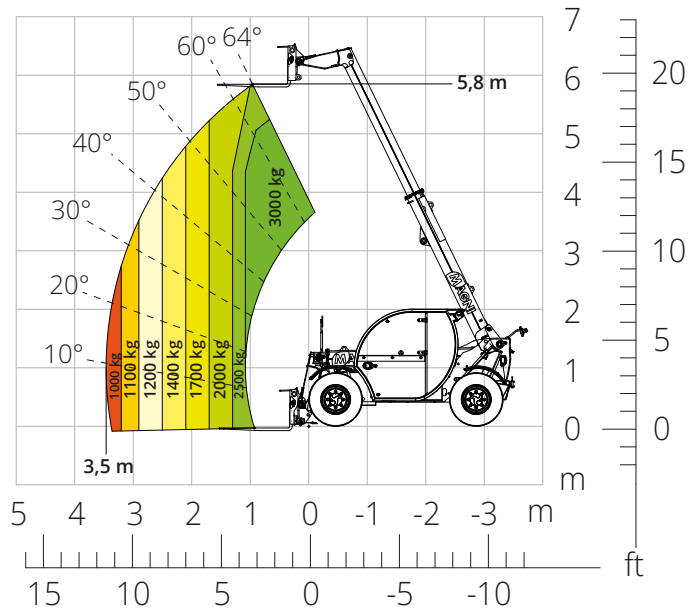
**SIDE**  
view



**TOP**  
view

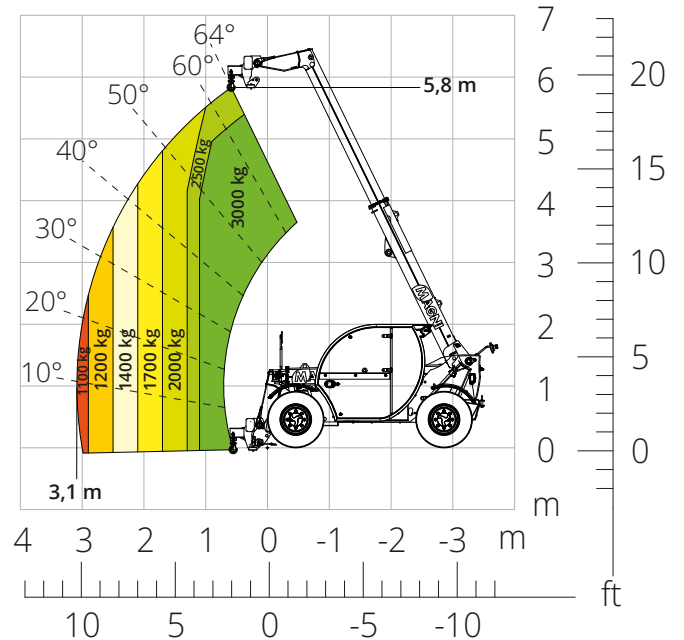
Load chart with  
**FEM FORK CARRIAGE 3,000 kg**

ATT 03-016



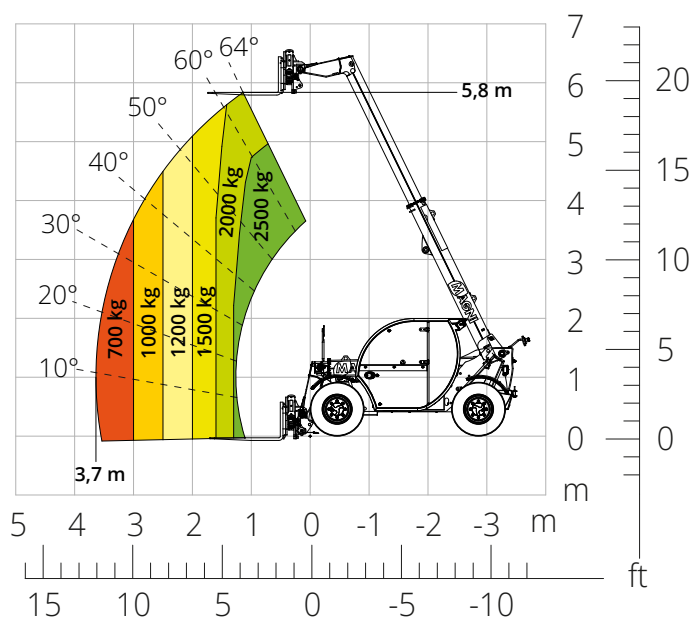
Load chart with  
**HOOK, 3,000 kg**

ATT-05-004



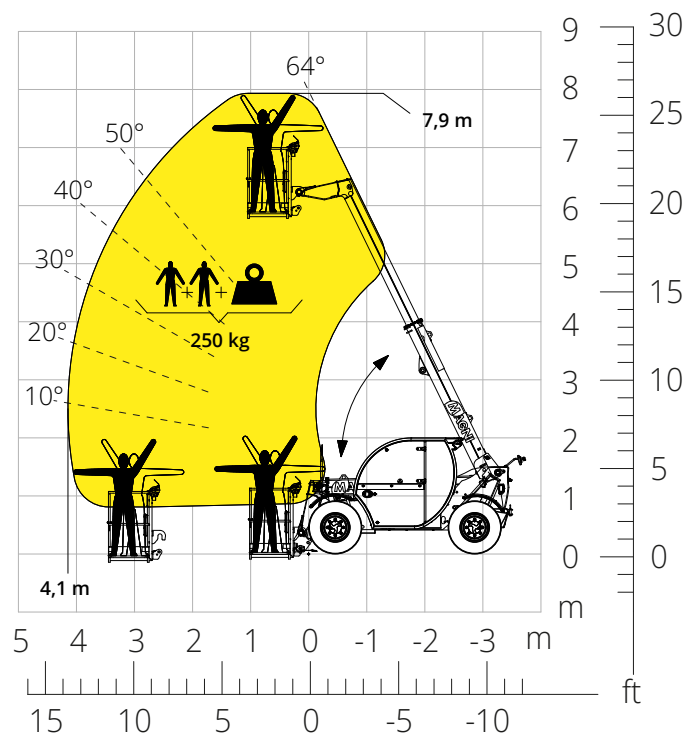
Load chart with  
**FEM FORK CARRIAGE 2,500 kg,  
SIDE TIPPING - FOR EMPTYING BINS**

ATT-03-054



Load chart with  
**FIXED PLATFORM, 250 kg**

ATT-01-002



TH  
3.6



#### CAB

Best-in-class  
safety and visibility



#### PERFORMANCE

Unrivalled lifting  
performance



#### LOAD LIVE DIAGRAM

Two real-time dynamic  
load charts

Machine model	Telescopic handler	TH 3.6	
	Maximum lifting capacity	3,000 kg	
	Maximum lifting height	5.80 m	
	Maximum reach	3.20 m	
Stabilizer	Type	-	
Engine	Model	Deutz TD 2,9 L4 EDG Stage IIIA	Deutz TD 2,9 L4 Stage V
	Rated power	55.4 kW (75.3 hp) at 2,600 rpm	
	Maximum torque	260 Nm at 1,600 rpm	
	Displacement	2.9 l	
	Cylinders	4 in line	
	Engine configuration	Turbocharged direct injection diesel	
	Cooling system	Water	
Transmission	Type	Hydrostatic	
	Maximum pressure	500 bar	
	Gear box	Direct drive 2 speed	
Axles and brakes	Type	Axles with planetary gearboxes	
	Front axle	Steering	
	Rear axle	Free oscillation	
	No. of driving/steering wheels	4WD - 4WS	
	Steering mode	Frontal/Concentric/Crab	
	Service brake	Wet multi-disk on front axle	
	Parking brake	Hydraulic with negative action on front axle	
	Tyres dimensions	12.0/75 R18	
	Max. travel speed	35 km/h	
Performance	Gradeability (unladen)	83%	
	Turning radius (end of forks)	4,060 mm	
	Weights	Total unladen*	4,850 kg
Front axle unladen (boom retracted and lowered)*		2,000 kg	
Rear axle unladen (boom retracted and lowered)*		2,850 kg	
Tank and system capacities	Fuel tank	65 l	
	AdBlue	-	
	Hydraulic oil tank	85 l	
	Engine oil tank	9 l	
	Cooling liquid	15 l	
Hydraulic circuit for movements	Circuit type	Gear pump	
	Service pump	Fixed displacement	
	Max. hydraulic flow rate	87 l/min	
	Max. boom head flow rate	75 l/m	
	Max. operating system pressure	255 bar	
	Controls for boom movements	Electro-proportional valve	
	Movements control	1 joystick with integrated manoeuvre enable	
Standard met	2006/42/EC: EU Machinery Directive		
	2016/1628: EU Regulation on the emissions of stage V engines		
	EN 1459-X: Relating to standards on the safety requirements for variable reach machines		
	EN 280-1: standards relating to mobile elevating work platforms (if available)		
	ROPS/FOPS: relating to the standards for protective structures		

The data given in this brochure are provided for information purposes and are subject to change without prior notice.

All images are purely guideline and might not give an exact representation of the product.

\*the stated weight refers to the vehicle unladen with standard equipment and may vary depending on the chosen configuration.

The standard machine configuration includes:

### CAB

- Air suspension comfort seat
- Adjustable steering column
- Adjustable sunblind
- Heating
- USB Type-A and Type-C (5 V) inputs

### REAL TIME INFORMATION

- Touchscreen, 7"
- MCTS – Magni Combi Touch System on-board software
- LMI – Load Moment Indicator
- Onboard and remote integrated diagnostics

### TECHNICAL SPECIFICATIONS

- Q-fit type 2 standard
- Advanced two-line CAN BUS system
- Automatic front and rear wheel alignment
- Automatic parking brake
- External battery cut-off
- Electrical system: 12 V – IP67

### SERVICE

- Warranty: 24 months/2,000 hours